

# Bytový dom, Mendelsohn

## BYT 16B 4

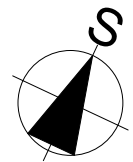
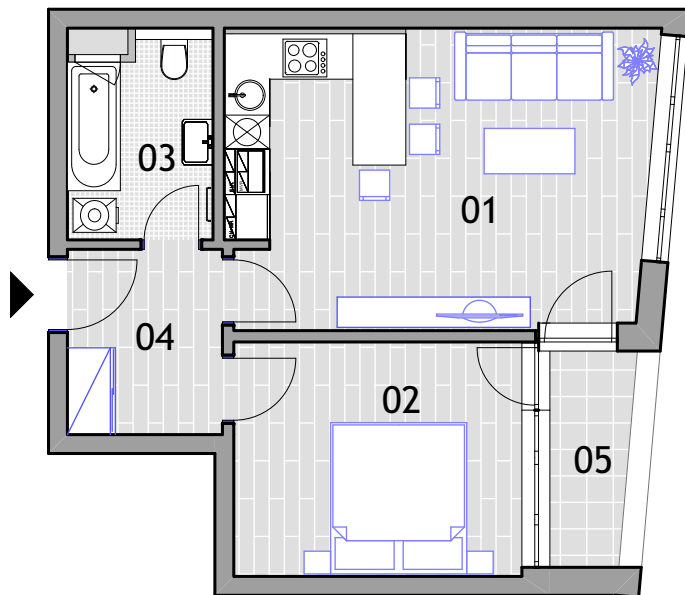
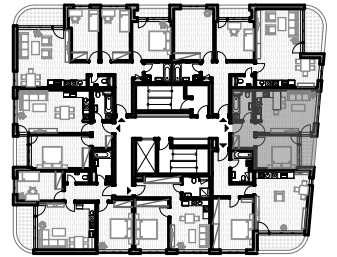
3. poschodie

2-izbový

byt 43,85m<sup>2</sup>

loggia 2,96m<sup>2</sup>

spolu: 46,81m<sup>2</sup>



01	Obývacia izba + kuchyňa	22,04
02	Izba	11,81
03	Kúpeľňa	4,98
04	Chodba	5,02
	<b>spolu:</b>	<b>43,85</b>
05	Loggia	2,96
	<b>spolu:</b>	<b>2,96</b>